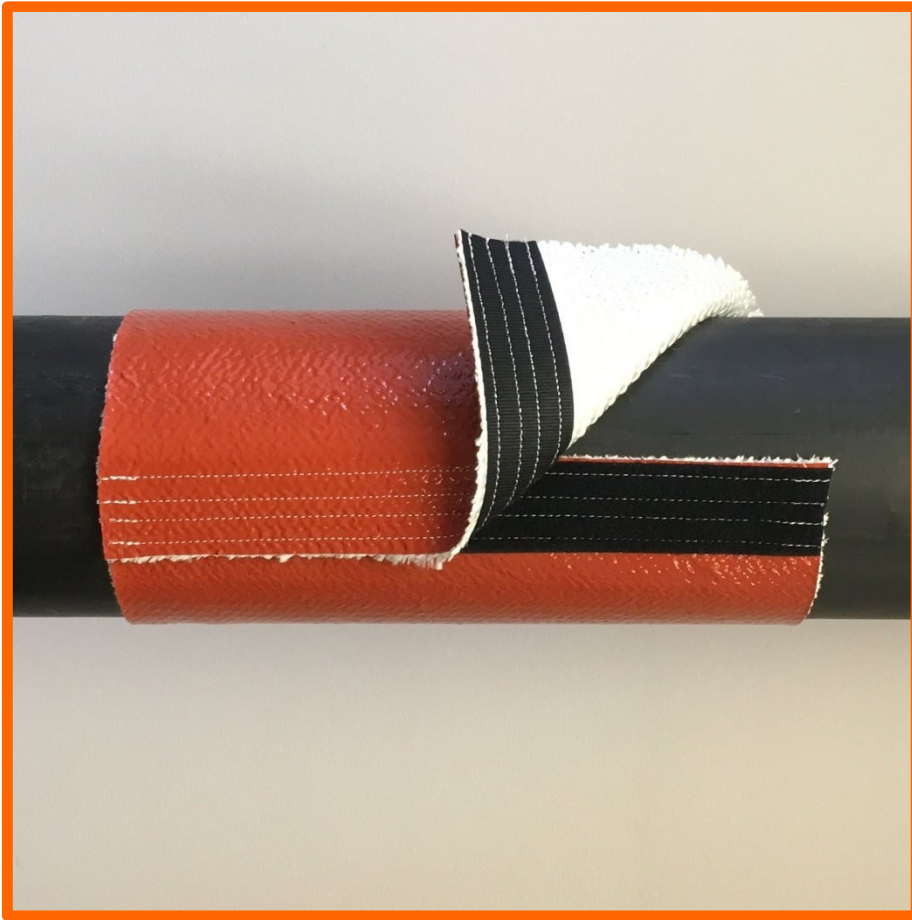


InsulDynamic™ HiFlex Firesleeve with VELCRO® Brand Hook & Loop Closure
500°F / 260°C Continuous Rating – Higher Temperature for Shorter Periods
High Temperature, Heat, Flame, Fire, Weld Splatter and Molten Splash & Slag Resistant



InsulDynamic™ Firesleeve with flame retardant hook and loop or VELCRO® Brand closure is a high temperature heavy duty sleeve for protecting industrial hose and cable, but with the benefits of being installed & removed as required without disconnecting the hose, cable or wire.

The sleeve is fabricated from a braided base fabric (similar to our S-FSHD sleeve construction) which provides radial elasticity, easily accommodating connectors and splices.

Typical applications include:

- Electric Arc Furnace cable covers
- Robotic welding cable protection
- Steel mill roll-stand hydraulic hose protection
- Steel mill cooling water hose protection
- Vehicle under-hood wire, cable and hose protection or as a cover in extreme environments where serviceability is required.

The closure remains inside of the sleeve and is protected by the fabric overlap. The thread used is a high temperature e-fiberglass for installation with no or minimal flexing. A Nomex thread is used for installations subject to flexing.

Visit our website for a you tube video which compares the HiFlex and LoFlex versions..

Flame retardant hook & loop is utilized meeting MIL-F-21840, AA-55126, NFPA 1971-1991, FMVSS 302, FAA 25.853a. VELCRO® Brand hook and loop is also available.

This product may be suitable to protect personnel from hot pipe burns and OSHA compliance. Please contact our technical support in order to calculate temperature drop profile in your application.

Also an excellent cold temperature sleeve with flexibility to -76°C for refrigeration and cryogenic applications.

This is a custom fabrication item – please allow 3 to 10 business days from date of order. Contact us to determine the specific production time for your order.

The long edge of the sleeve has some fray of the underlying fiberglass, which does not affect the performance of the sleeve, and is only an aesthetic consideration.

The standard hook and loop and also VELCRO® Brand closure is a nylon material. Nomex® and Stainless Steel is available. For Nomex® add \$7.00 per foot to listed price. For Stainless Steel add \$36.00 per foot to listed price. Sleeve with Nomex® or Stainless Steel closure will have 1" wide closure material. Delivery time for other than standard will be a few additional days. See our catalog page for Nomex® and Stainless Steel closure for temperature ratings and other specifications.

Sizes larger than 5 inches ID contain an overlap seam of the base material opposite the closure location.

InsulDynamic™ HiFlex Firesleeve with VELCRO® Brand Hook & Loop Closure

500°F / 260°C Continuous Rating – Higher Temperature for Shorter Periods

High Temperature, Heat, Flame, Fire, Weld Splatter and Molten Slag Resistant



**500°F / 260°C continuous rating with weld splatter / molten metal splash protection.
2200°F / 1205°C for periods up to 15 minutes and short excursions to 3000°F / 1650°C.**

InsulDynamic™ HiFlex Firesleeve with VELCRO® Brand Hook / Loop Closure - Small Diameter						
Nominal ID inches / mm / Dash #			Part Number	Hook & loop Width, inches	Price per Foot	Price per Metre
1/2	13	-08	S-FS-VCL-SM-M013-08	1/2	\$ 14.56	\$ 47.76
3/4	19	-12	S-FS-VCL-SM-M019-12	1/2	\$ 17.34	\$ 56.88
1	25	-16	S-FS-VCL-SM-M025-16	5/8	\$ 20.29	\$ 66.55
1 1/4	32	-20	S-FS-VCL-SM-M032-20	5/8	\$ 22.60	\$ 74.13
1 1/2	38	-24	S-FS-VCL-SM-M038-24	3/4	\$ 24.83	\$ 81.44
1 3/4	44	-28	S-FS-VCL-SM-M044-28	3/4	\$ 26.77	\$ 87.81
2	51	-32	S-FS-VCL-SM-M051-32	3/4	\$ 29.21	\$ 95.81
2 1/4	57	-36	S-FS-VCL-SM-M057-36	3/4	\$ 31.23	\$ 102.43
2 1/2	64	-40	S-FS-VCL-SM-M064-40	3/4	\$ 33.49	\$ 109.85
2 3/4	70	-44	S-FS-VCL-SM-M070-44	3/4	\$ 35.80	\$ 117.42
3	76	-48	S-FS-VCL-SM-M076-48	1	\$ 37.94	\$ 124.44
3 1/4	83	-52	S-FS-VCL-SM-M083-52	1	\$ 40.34	\$ 132.32
3 1/2	89	-56	S-FS-VCL-SM-M089-56	1	\$ 42.29	\$ 138.71
3 3/4	95	-60	S-FS-VCL-SM-M095-60	1	\$ 44.51	\$ 145.99
4	102	-64	S-FS-VCL-SM-M102-64	1	\$ 48.37	\$ 158.65
4 1/4	108	-68	S-FS-VCL-SM-M108-68	1	\$ 50.54	\$ 165.77
4 1/2	114	-72	S-FS-VCL-SM-M114-72	1	\$ 52.94	\$ 173.64
4 3/4	121	-76	S-FS-VCL-SM-M121-76	1	\$ 55.17	\$ 180.96
5	127	-80	S-FS-VCL-SM-M127-80	1	\$ 57.54	\$ 188.73

Available in continuous lengths up to 100 feet for up to 3.5" I.D.

Customer may specify a hook/loop width other than standard if desired (except for 1/2 and 3/4" sleeve).

Continued....

InsulDynamic™ HiFlex Firesleeve with VELCRO® Brand Hook & Loop Closure (Continued)

Large Diameter

Large Diameter Firesleeve with VELCRO® Brand Hook & Loop Closure in sizes larger than 5 inches ID contains an overlap seam of the material opposite the closure location.

500°F / 260°C continuous rating with weld splatter / molten metal splash protection.
2200°F / 1205°C for periods up to 15 minutes and short excursions to 3000°F / 1650°C.

InsulDynamic™ Firesleeve with VELCRO® Brand Hook & Loop Closure: Large Diameter						
Nominal ID inches / mm / Dash #			Part Number	Hook/Loop Width, inches	Price per Foot	Price per Metre
5 1/4	133	-84	S-FS-VCL-LG-M133-84	1.5	\$ 59.37	\$ 194.73
5 1/2	140	-88	S-FS-VCL-LG-M140-88	1.5	\$ 61.66	\$ 202.25
5 3/4	146	-92	S-FS-VCL-LG-M146-92	1.5	\$ 63.94	\$ 209.72
6	152	-96	S-FS-VCL-LG-M152-96	1.5	\$ 66.11	\$ 216.84
6 1/4	159	-100	S-FS-VCL-LG-M159-100	1.5	\$ 68.51	\$ 224.71
6 1/2	165	-104	S-FS-VCL-LG-M165-104	1.5	\$ 70.74	\$ 232.03
6 3/4	171	-108	S-FS-VCL-LG-M171-108	1.5	\$ 72.74	\$ 238.59
7	178	-112	S-FS-VCL-LG-M178-112	1.5	\$ 74.97	\$ 245.90
7 1/4	184	-116	S-FS-VCL-LG-M184-116	1.5	\$ 76.97	\$ 252.46
7 1/2	191	-120	S-FS-VCL-LG-M191-120	1.5	\$ 79.54	\$ 260.89
7 3/4	197	-124	S-FS-VCL-LG-M197-124	1.5	\$ 81.77	\$ 268.21
8	203	-128	S-FS-VCL-LG-M203-128	1.5	\$ 83.69	\$ 274.50
8 1/4	210	-132	S-FS-VCL-LG-M210-132	1.5	\$ 86.26	\$ 282.93
8 1/2	216	-136	S-FS-VCL-LG-M216-136	1.5	\$ 88.43	\$ 290.05
8 3/4	222	-140	S-FS-VCL-LG-M222-140	1.5	\$ 90.23	\$ 295.95
9	229	-144	S-FS-VCL-LG-M229-144	1.5	\$ 92.57	\$ 303.63
9 1/4	235	-148	S-FS-VCL-LG-M235-148	1.5	\$ 94.49	\$ 309.93
9 1/2	241	-152	S-FS-VCL-LG-M241-152	1.5	\$ 97.20	\$ 318.82
9 3/4	248	-156	S-FS-VCL-LG-M248-156	1.5	\$ 99.37	\$ 325.93
10	254	-160	S-FS-VCL-LG-M254-160	1.5	\$ 101.66	\$ 333.45
10 1/4	260	-164	S-FS-VCL-LG-M260-164	1.5	\$ 104.00	\$ 341.12
10 1/2	267	-168	S-FS-VCL-LG-M267-168	1.5	\$ 105.60	\$ 346.37
10 3/4	273	-172	S-FS-VCL-LG-M273-172	1.5	\$ 113.31	\$ 371.66
11	279	-176	S-FS-VCL-LG-M279-176	1.5	\$ 115.66	\$ 379.36
11 1/4	286	-180	S-FS-VCL-LG-M286-180	1.5	\$ 118.51	\$ 388.71
11 1/2	292	-184	S-FS-VCL-LG-M292-184	1.5	\$ 122.37	\$ 401.37
11 3/4	298	-188	S-FS-VCL-LG-M298-188	1.5	\$ 126.22	\$ 414.01
12	305	-192	S-FS-VCL-LG-M305-192	1.5	\$ 129.41	\$ 424.46

Available in continuous lengths up to 100 feet. Larger Diameters available by quote.

The standard closure is nylon. A wider 2" hook and loop closure is available, which provides a greater adjustment range. Nomex® and Stainless Steel is available. For Nomex® add \$7.00 per foot to listed price and for Stainless Steel add \$36.00 per foot to listed price for 1" wide closure. For Nomex® add \$14.00 per foot to listed price and for Stainless Steel add \$72.00 per foot to listed price for 2" wide closure (2" wide stainless steel closure is constructed by using 2 x 1" wide strips). Delivery time for other than standard will be a few additional days. See our catalog page for Nomex® and Stainless Steel closure for temperature ratings and other specifications.

SplashGard™ HD LoFlex Sleeve with VELCRO® Brand Hook & Loop Closure 500°F / 260°C Continuous Rating – Higher Temperature for Shorter Periods High Temperature, Heat, Flame, Fire, Weld Splatter and Molten Splash & Slag Resistant



SplashGard™ HD sleeve is a high temperature sleeve with a flame retardant hook and loop or VELCRO® Brand hook and loop closure that is suitable to protect hoses and cables from molten splash.

It may be installed and removed without disconnecting the hose, cable or wire. The sleeve is fabricated from a heavy duty woven fabric which is then coated with a thick layer of self extinguishing silicone rubber elastomer.

Due to the woven base material and deep elastomer impregnation, this material is stiff and provides no elasticity compared to our InsulDynamic version. This sleeve should be slightly oversized if it will require flexing or installation on curved installations. It is designed for straight or slightly curved sections or runs of hose, pipe or cables, and is difficult to use in a tightly curved path or one requiring high flexibility. Visit our website for a you tube video which compares the HiFlex and LoFlex versions..

Typical applications include protection of Electric Arc Furnace cables, robotic welding cables, steel mill roll-stand hydraulic hoses, steel mill cooling water hoses, vehicle under-hood wiring, cable and hoses. The same material is also used to fabricate custom protection covers for enclosures and equipment protection where serviceability is required.

The closure remains inside of the sleeve and is protected by the fabric overlap. Thread used is a high temperature e-fiberglass. Flame retardant hook & loop is utilized meeting MIL-F-21840, AA-55126, NFPA 1971-1991, FMVSS 302, FAA 25.853a.

This product may be suitable to protect personnel from hot pipe burns and OSHA compliance. Please contact our technical support in order to calculate temperature drop profile in your application.

Also an excellent cold temperature sleeve with flexibility to -76°C for refrigeration and cryogenic applications.

This is a custom fabrication item – please allow 3 to 10 business days from date of order. Contact us to determine the specific production time for your order.

The long edge of the sleeve has some fray of the underlying fiberglass, which does not affect the performance of the sleeve, and is only an aesthetic consideration.

The standard closure is nylon. Nomex® and Stainless Steel is available. For Nomex® add \$7.00 per foot to listed price. For Stainless Steel add \$36.00 per foot to listed price. Sleeve with Nomex® or Stainless Steel closure will have 1" wide closure material. Delivery time for other than standard will be a few additional days. See our catalog page for Nomex® and Stainless Steel closure for temperature ratings and other specifications.

SplashGard™ HD LoFlex Sleeve with VELCRO® Brand Hook & Loop Closure

500°F / 260°C Continuous Rating – Higher Temperature for Shorter Periods

High Temperature, Heat, Flame, Fire, Weld Splatter and Molten Slag Resistant



500°F / 260°C continuous rating with weld splatter / molten metal splash protection.
2200°F / 1205°C for periods up to 15 minutes and short excursions to 3000°F / 1650°C.

**SplashGard™ HD Sleeve with VELCRO® Brand Hook / Loop Closure
Small Diameter**

Nominal ID inches / mm / Dash #			Part Number	Hook & loop Width, inches	Price per Foot	Price per Metre
1 1/2	38	-24	S-FGSRHD-VCL-M038-24	3/4	\$ 24.83	\$ 81.44
1 3/4	44	-28	S-FGSRHD-VCL-M044-28	3/4	\$ 26.77	\$ 87.81
2	51	-32	S-FGSRHD-VCL-M051-32	3/4	\$ 29.21	\$ 95.81
2 1/4	57	-36	S-FGSRHD-VCL-M057-36	3/4	\$ 31.23	\$ 102.43
2 1/2	64	-40	S-FGSRHD-VCL-M064-40	3/4	\$ 33.49	\$ 109.85
2 3/4	70	-44	S-FGSRHD-VCL-M070-44	3/4	\$ 35.80	\$ 117.42
3	76	-48	S-FGSRHD-VCL-M076-48	1	\$ 37.94	\$ 124.44
3 1/4	83	-52	S-FGSRHD-VCL-M083-52	1	\$ 40.34	\$ 132.32
3 1/2	89	-56	S-FGSRHD-VCL-M089-56	1	\$ 42.29	\$ 138.71
3 3/4	95	-60	S-FGSRHD-VCL-M095-60	1	\$ 44.51	\$ 145.99
4	102	-64	S-FGSRHD-VCL-M102-64	1	\$ 48.37	\$ 158.65
4 1/4	108	-68	S-FGSRHD-VCL-M108-68	1	\$ 50.54	\$ 165.77
4 1/2	114	-72	S-FGSRHD-VCL-M114-72	1	\$ 52.94	\$ 173.64
4 3/4	121	-76	S-FGSRHD-VCL-M121-76	1	\$ 55.17	\$ 180.96
5	127	-80	S-FGSRHD-VCL-M127-80	1	\$ 57.54	\$ 188.73

Available in continuous lengths up to 100 feet for up to 3.5" I.D.

Customer may specify a hook/loop width other than standard if desired (except for 1/2 and 3/4" sleeve).

Continued...

SplashGard™ HD LoFlex Sleeve with VELCRO® Brand Hook & Loop Closure (Continued)
Large Diameter

Large Diameter Firesleeve with VELCRO® Brand Hook & Loop Closure in sizes larger than 5 inches ID contains an overlap seam of the material opposite the closure.

500°F / 260°C continuous rating with weld splatter / molten metal splash protection.
 2200°F / 1205°C for periods up to 15 minutes and short excursions to 3000°F / 1650°C.

SplashGard™ HD Sleeve with VELCRO® Brand Hook & Loop Closure: Large Diameter						
Nominal ID inches / mm / Dash #			Part Number	Hook/Loop Width, inches	Price per Foot	Price per Metre
5 1/4	133	-84	S-FGSRHD-VCL-M133-84	2	\$ 59.37	\$ 194.73
5 1/2	140	-88	S-FGSRHD-VCL-M140-88	2	\$ 61.66	\$ 202.25
5 3/4	146	-92	S-FGSRHD-VCL-M146-92	2	\$ 63.94	\$ 209.72
6	152	-96	S-FGSRHD-VCL-M152-96	2	\$ 66.11	\$ 216.84
6 1/4	159	-100	S-FGSRHD-VCL-M159-100	2	\$ 68.51	\$ 224.71
6 1/2	165	-104	S-FGSRHD-VCL-M165-104	2	\$ 70.74	\$ 232.03
6 3/4	171	-108	S-FGSRHD-VCL-M171-108	2	\$ 72.74	\$ 238.59
7	178	-112	S-FGSRHD-VCL-M178-112	2	\$ 74.97	\$ 245.90
7 1/4	184	-116	S-FGSRHD-VCL-M184-116	2	\$ 76.97	\$ 252.46
7 1/2	191	-120	S-FGSRHD-VCL-M191-120	2	\$ 79.54	\$ 260.89
7 3/4	197	-124	S-FGSRHD-VCL-M197-124	2	\$ 81.77	\$ 268.21
8	203	-128	S-FGSRHD-VCL-M203-128	2	\$ 83.69	\$ 274.50
8 1/4	210	-132	S-FGSRHD-VCL-M210-132	2	\$ 86.26	\$ 282.93
8 1/2	216	-136	S-FGSRHD-VCL-M216-136	2	\$ 88.43	\$ 290.05
8 3/4	222	-140	S-FGSRHD-VCL-M222-140	2	\$ 90.23	\$ 295.95
9	229	-144	S-FGSRHD-VCL-M229-144	2	\$ 92.57	\$ 303.63
9 1/4	235	-148	S-FGSRHD-VCL-M235-148	2	\$ 94.49	\$ 309.93
9 1/2	241	-152	S-FGSRHD-VCL-M241-152	2	\$ 97.20	\$ 318.82
9 3/4	248	-156	S-FGSRHD-VCL-M248-156	2	\$ 99.37	\$ 325.93
10	254	-160	S-FGSRHD-VCL-M254-160	2	\$ 101.66	\$ 333.45
10 1/4	260	-164	S-FGSRHD-VCL-M260-164	2	\$ 104.00	\$ 341.12
10 1/2	267	-168	S-FGSRHD-VCL-M267-168	2	\$ 105.60	\$ 346.37
10 3/4	273	-172	S-FGSRHD-VCL-M273-172	2	\$ 113.31	\$ 371.66
11	279	-176	S-FGSRHD-VCL-M279-176	2	\$ 115.66	\$ 379.36
11 1/4	286	-180	S-FGSRHD-VCL-M286-180	2	\$ 118.51	\$ 388.71
11 1/2	292	-184	S-FGSRHD-VCL-M292-184	2	\$ 122.37	\$ 401.37
11 3/4	298	-188	S-FGSRHD-VCL-M298-188	2	\$ 126.22	\$ 414.01
12	305	-192	S-FGSRHD-VCL-M305-192	1.5	\$ 129.41	\$ 424.46

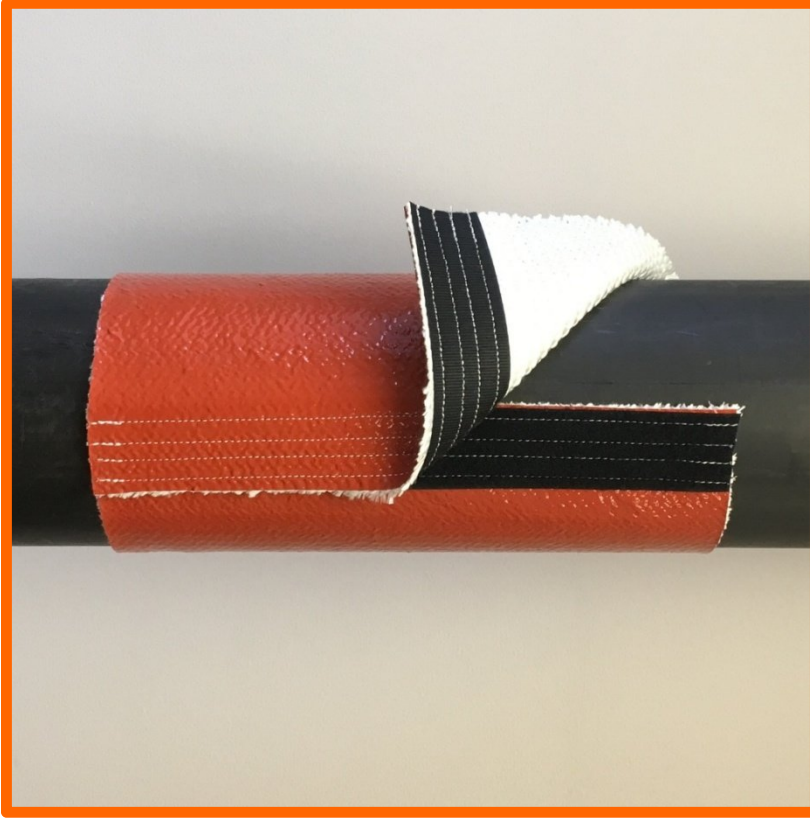
Available in continuous lengths up to 100 feet. Larger Diameters available by quote.

The standard closure is nylon. Nomex® and Stainless Steel is available. For Nomex® add \$7.00 per foot to listed price and for Stainless Steel add \$36.00 per foot to listed price for 1" wide closure. For Nomex® add \$14.00 per foot to listed price and for Stainless Steel add \$72.00 per foot to listed price for 2" wide closure (2" wide is constructed by using 2 x 1" wide). Delivery time for other than standard will be a few additional days. See our catalog page for Nomex® and Stainless Steel closure for temperature ratings and other specifications.



Aviation Firesleeve with FR Hook & Loop Closure

500°F / 260°C Continuous Rating – Higher Temperature for Shorter Periods
High Temperature, Heat, Flame & Fire Resistant



ZeusGard™ Firesleeve is a high temperature sleeve with YKK brand flame retardant hook and loop or VELCRO® Brand closure. SAE AS1072 firesleeve is used for construction of this retrofit sleeve which can be installed without disconnecting hoses, cables or wiring.

Typical applications are to protect fluid carrying hoses, cables and wires that are exposed to high temperatures or for additional protection in the event of fire. No guarantee is made as to the fire exposure time that this sleeve provides as it is modified from the AS1072 specification. Critical system components should be protected with standard AS1072 firesleeve without hook & loop closure.

The closure remains protected inside of the sleeve and is protected by the fabric overlap. The thread used is a high temperature e-fiberglass. Other threads such as stainless steel are available. The standard nylon hook and loop closure is flame retardant and meets MIL-F-21840, AA-55126, NFPA 1971-1991, FMVSS 302, FAA 25.853a.

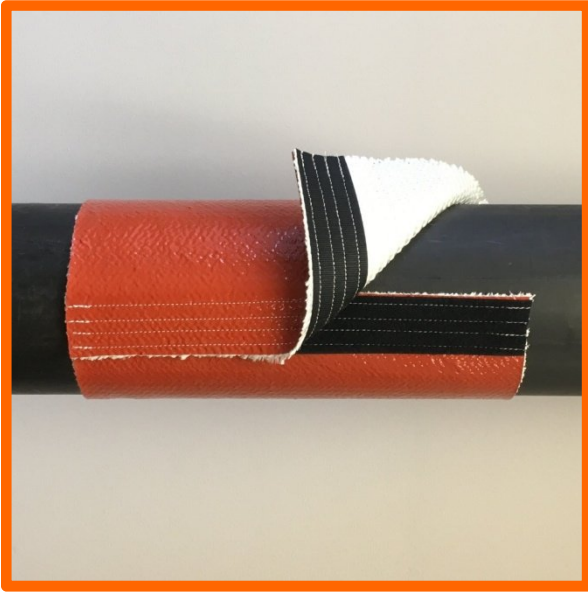
To aid in keeping the firesleeve closed in the event of exposure to higher than rated temperatures or in the event of flame exposure, this sleeve should be further secured with metal band clamps spaced at regular intervals.

This is a custom fabrication item – please allow 2 to 5 business days from date of order. Contact us to determine the specific production time for your order.

The long edge of the sleeve has some fray of the underlying fiberglass, which does not affect the performance of the sleeve, and is only an aesthetic consideration.

The standard closure is nylon hook & loop. Nomex® and Stainless Steel is available. For Nomex® add \$7.00 per foot. For Stainless Steel add \$36.00 per foot. Sleeve with Nomex® or Stainless Steel closure will have 1" wide closure material. Delivery time for other than standard will be a few additional days. See our catalog page for Nomex® and Stainless Steel closures for temperature ratings and other specifications.

Aviation Firesleeve with FR Hook & Loop Closure (Continued)
500°F / 260°C Continuous Rating – Higher Temperature for Shorter Periods
High Temperature, Heat, Flame & Fire Resistant



500°F / 260°C continuous rating.
2200°F / 1205°C for periods up to 15 minutes and short excursions to 3000°F / 1650°C.

ZeusGard™ Aviation Firesleeve with Hook & Loop Closure						
Nominal ID inches / mm / Dash #			Part Number	Hook & loop Width, inches	Price per Foot	Price per Metre
1/2	13	-08	S-FS-VCL-AERO-M013-08	1/2	\$ 17.56	\$ 57.60
3/4	19	-12	S-FS-VCL-AERO-M019-12	1/2	\$ 20.34	\$ 66.72
1	25	-16	S-FS-VCL-AERO-M025-16	5/8	\$ 23.29	\$ 76.39
1 1/4	32	-20	S-FS-VCL-AERO-M032-20	5/8	\$ 25.60	\$ 83.97
1 1/2	38	-24	S-FS-VCL-AERO-M038-24	3/4	\$ 27.83	\$ 91.28
1 3/4	44	-28	S-FS-VCL-AERO-M044-28	3/4	\$ 29.77	\$ 97.65
2	51	-32	S-FS-VCL-AERO-M051-32	3/4	\$ 32.21	\$ 105.65
2 1/4	57	-36	S-FS-VCL-AERO-M057-36	3/4	\$ 34.23	\$ 112.27
2 1/2	64	-40	S-FS-VCL-AERO-M064-40	3/4	\$ 37.49	\$ 122.97
2 3/4	70	-44	S-FS-VCL-AERO-M070-44	3/4	\$ 38.80	\$ 127.26
3	76	-48	S-FS-VCL-AERO-M076-48	1	\$ 40.94	\$ 134.28
3 1/4	83	-52	S-FS-VCL-AERO-M083-52	1	\$ 43.34	\$ 142.16
3 1/2	89	-56	S-FS-VCL-AERO-M089-56	1	\$ 45.29	\$ 148.55
3 3/4	95	-60	S-FS-VCL-AERO-M095-60	1	\$ 47.21	\$ 154.85
4	102	-64	S-FS-VCL-AERO-M102-64	1	\$ 48.37	\$ 158.65
4 1/4	108	-68	S-FS-VCL-AERO-M108-68	1	\$ 50.54	\$ 165.77
4 1/2	114	-72	S-FS-VCL-AERO-M114-72	1	\$ 52.94	\$ 173.64
4 3/4	121	-76	S-FS-VCL-AERO-M121-76	1	\$ 55.17	\$ 180.96
5	127	-80	S-FS-VCL-AERO-M127-80	1	\$ 57.54	\$ 188.73

Available in continuous lengths up to 100 feet.
Larger ID (Inside Diameter) Sizes Available - Please Ask